



---

# KEE TAS KEE NOW TRIBAL COUNCIL EDUCATION AUTHORITY

February 2024

AFN Language and Learning Forum

---

Calgary, Alberta

# History of KTCEA

---

## Elders/Leaders vision for Education:

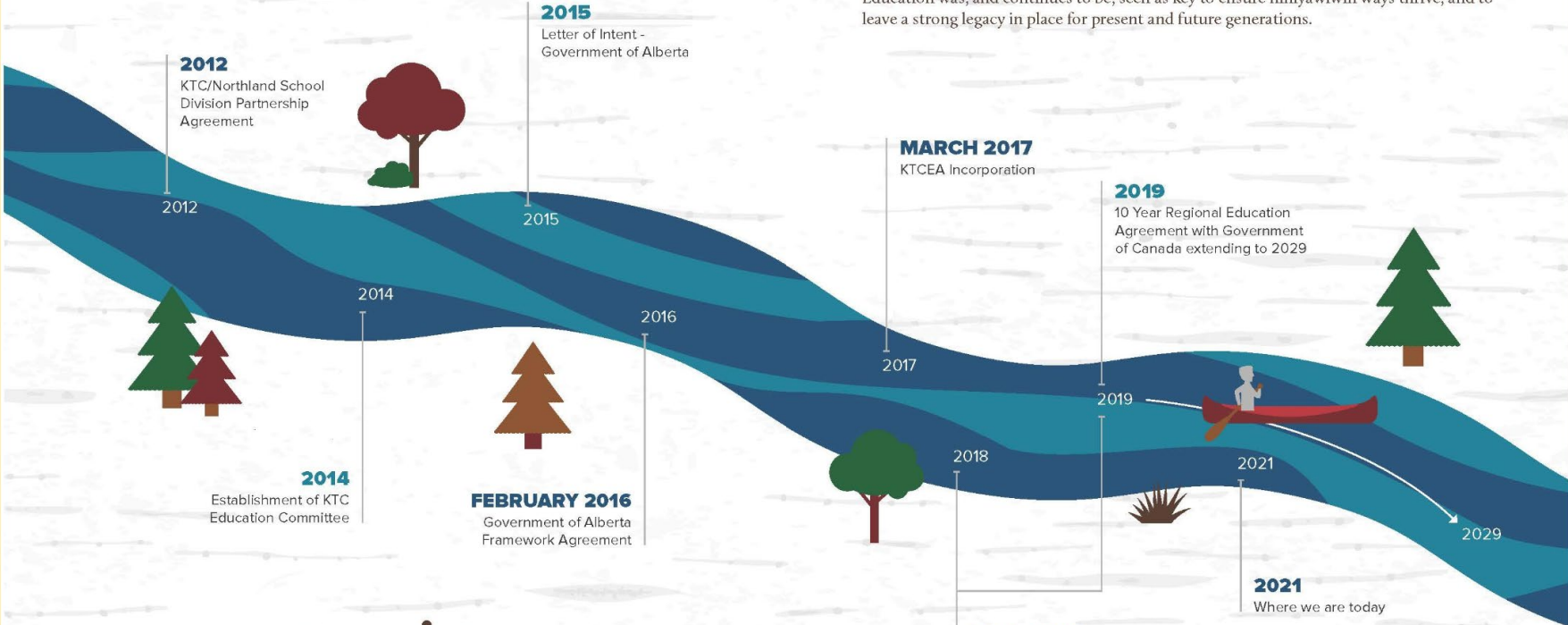
- Better and stronger education for children if KTC Nations came together
  - “Five strands of a cord cannot be easily broken”
- Education key to ensuring nihiyawiwinn ways thrive
- Education is the legacy for present and future generations



# Journey to a First Nations-led Education System

For decades, KTCEA Elders and leaders from Loon River First Nation, Lubicon Lake Band, Peerless Trout First Nation, Whitefish Lake First Nation, and Woodland Cree First Nation have had a vision for education: a single education authority to provide education for students from each KTC Nation.

Education was, and continues to be, seen as key to ensure nīhiyāwiwin ways thrive, and to leave a strong legacy in place for present and future generations.



ᓂᓚᓃᓂ ᓂᓚᓃᓂ ᓂᓚᓃᓂ ᓂᓚᓃᓂ ᓂᓚᓃᓂ ᓂᓚᓃᓂ

**2018 - 2019**  
Transfer of administration of six schools to KTCEA

Chief + Council    Chief + Council    Chief + Council



Little  
Buffalo  
School

Peerless  
Lake School

Kateri  
School



Cadotte  
Lake  
School

Clarence  
Jaycox  
School

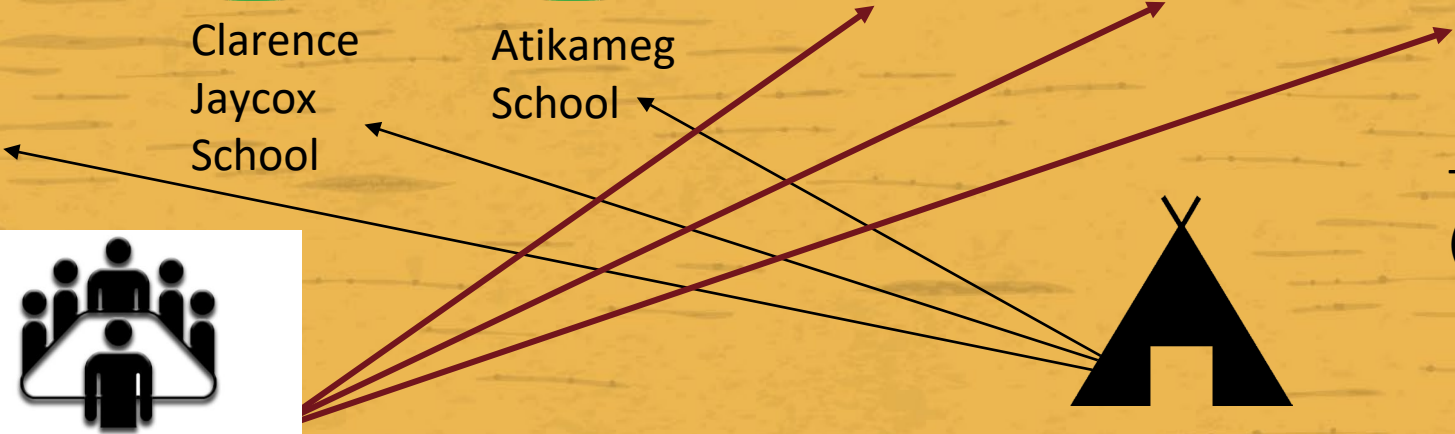
Atikameg  
School

Treaty 8  
(S.I.S)



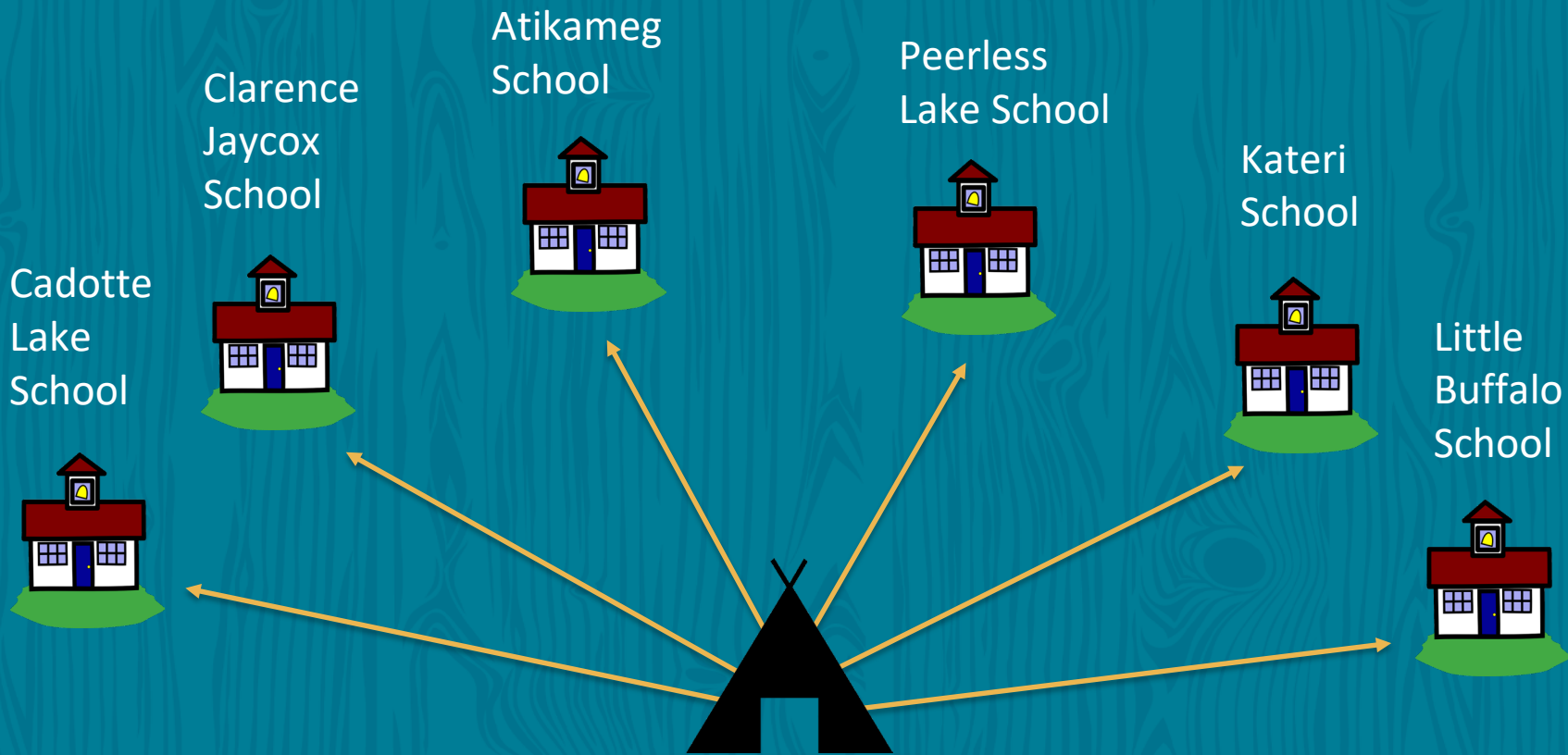
Northland School Division

Kee Tas Kee Now Tribal Council



# KTCEA Regional Education Agreement (REA) - 2019





Benefits of coming together

# KTC First Nations Territory

## KEE TAS KEE NOW TRADITIONAL LANDS



### Legend

 KTC TRADITIONAL LANDS



# Kee Tas Kee Now Tribal Council (KTC)

---

The **Kee Tas Kee Now Tribal Council** (KTC) is comprised of:

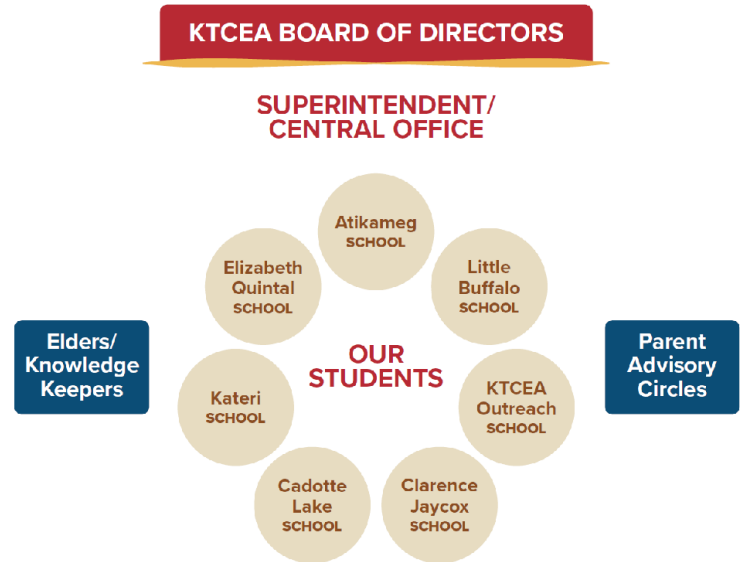
- Loon River First Nation
- Lubicon Lake Band
- Peerless Trout First Nation
- Whitefish Lake First Nation
- Woodland Cree First Nation

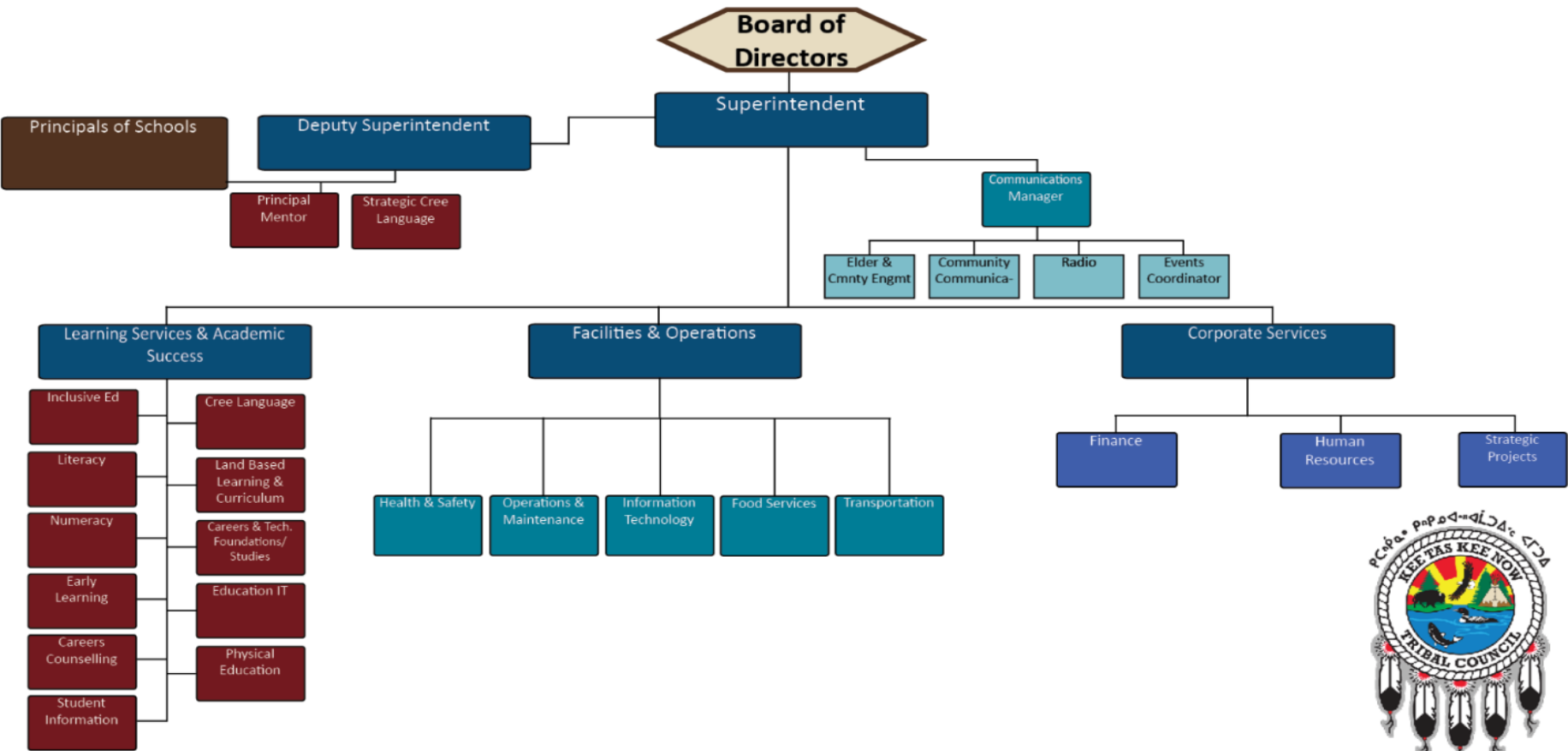


# Governance

---

- Board of Directors consists of 3 representatives from each of the 5 KTC First Nations
- KTCEA also receives guidance and oversight from Kee Tas Kee Now Tribal Council.
- Elders strengthen and realize the vision of KTCEA
  - Elder Advisory Committee (Board)
  - Elders in Residence Program
  - (Schools)





# KTCEA Second Level Services

---

- Common Consistent Curriculum
- Land Based Learning
- Cree Language
- Literacy
- Numeracy
- Inclusive Education
- Sports Programming
- Guidance/Counselling
- Career and Technology Studies
- School Nutrition
- Virtual Programming
- Early childhood education
- Mental Health
- Finance
- Human Resources
- Transportation
- Operations and Maintenance
- IT/Connectivity Support
- Student Information System
- Partnerships/intergovernmental agreements
- Board administration
- Strategic Planning and Policy
- Professional learning and mentorship

# KTCEA - Success Indicators

## Students

- 1250 students receive a lunch and healthy snacks daily
- Traditional meal program
- Common assessments in place to ensure our students are properly assessed
- Cree Language Program- Specialist supporting Cree language instructors
- Outreach Program launched - 5 sites in operation
- KTCEA Sports Program
- Common Consistent Curriculum

## Staff

- Large employer: 239 staff
- Competitive pay and pensions.
- 62% of staff are from KTC Nation
- KTCEA Conference (350 plus attendees)
- Enhanced PD opportunities for staff through regional PD and specialized PD
- Cree language assessment created and used to assess staff

## Policy/ Planning

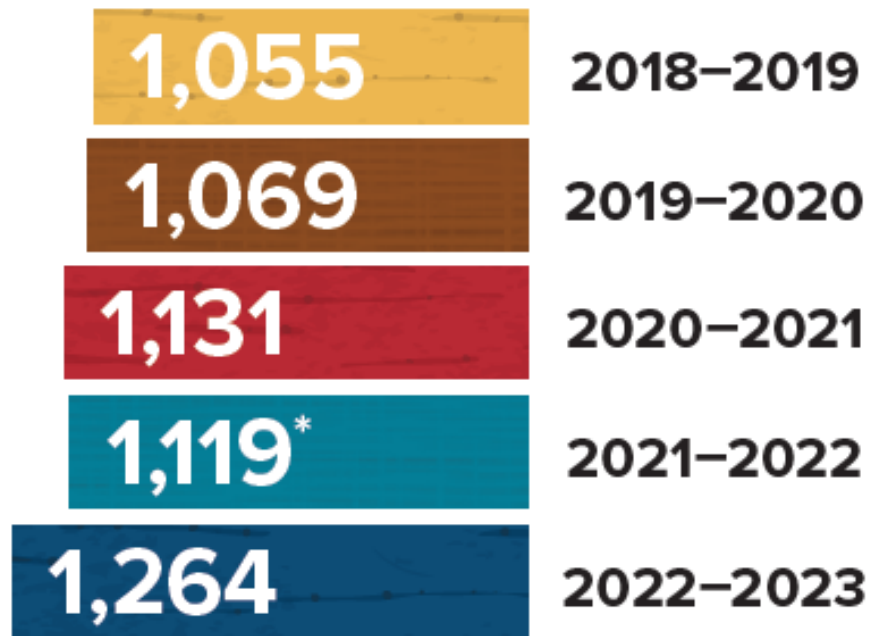
- Policies and procedures developed. 150 Administrative Procedures
- Strategic Plan, Branch plans and 3 year plans
- Financial Management Plan

## Assets

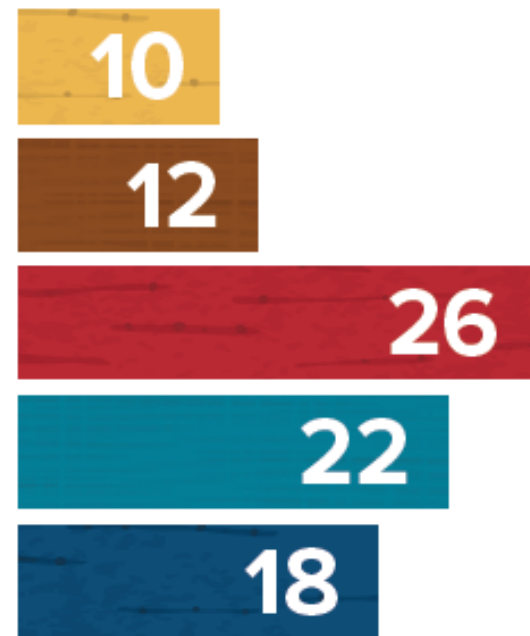
- 34 teacherages and 7 buses purchased
- Digital Signs at all schools
- Elders Speak App created in 2019 with 250 users
- Systems/licenses purchased including Atrieve, PowerSchool

## KTCEA Enrollment by Year

Source: Nominal Roll



## KTCEA Graduates by Year



\*Note: small drop likely due to Covid

# Nîhiyawîwin - Cree Language

- Cree Language Specialists
- Cree Language Instructors
- Development of Cree resources and videos
- Professional Development for Language Instructors
- Cree Language Competency Assessment
- Cree Immersion Days
- Cree language- Board level
- KTCEA Elders Speak App
- Cree Language Forum – March 2023



# Land Based Learning

---

- Cornerstone of KTCEA
- Dedicated LBL Specialist and Professional Learning Committee
- LBL lessons used to deliver curricular outcomes
- Lessons such as trapping and skinning, hunting, fishing, traditional meal preparation, snowshoeing and dog sledding.
- Relevant to our students- Increases student engagement



[https://www.youtube.com/watch?v=ty2k\\_Bux7FA](https://www.youtube.com/watch?v=ty2k_Bux7FA)

# Common and Consistent Curriculum (CCC)



## What it is:

- Ensures that learning is from local Cree perspective
- Grounded on 4 pillars: Leadership, land based learning, storytelling and healing

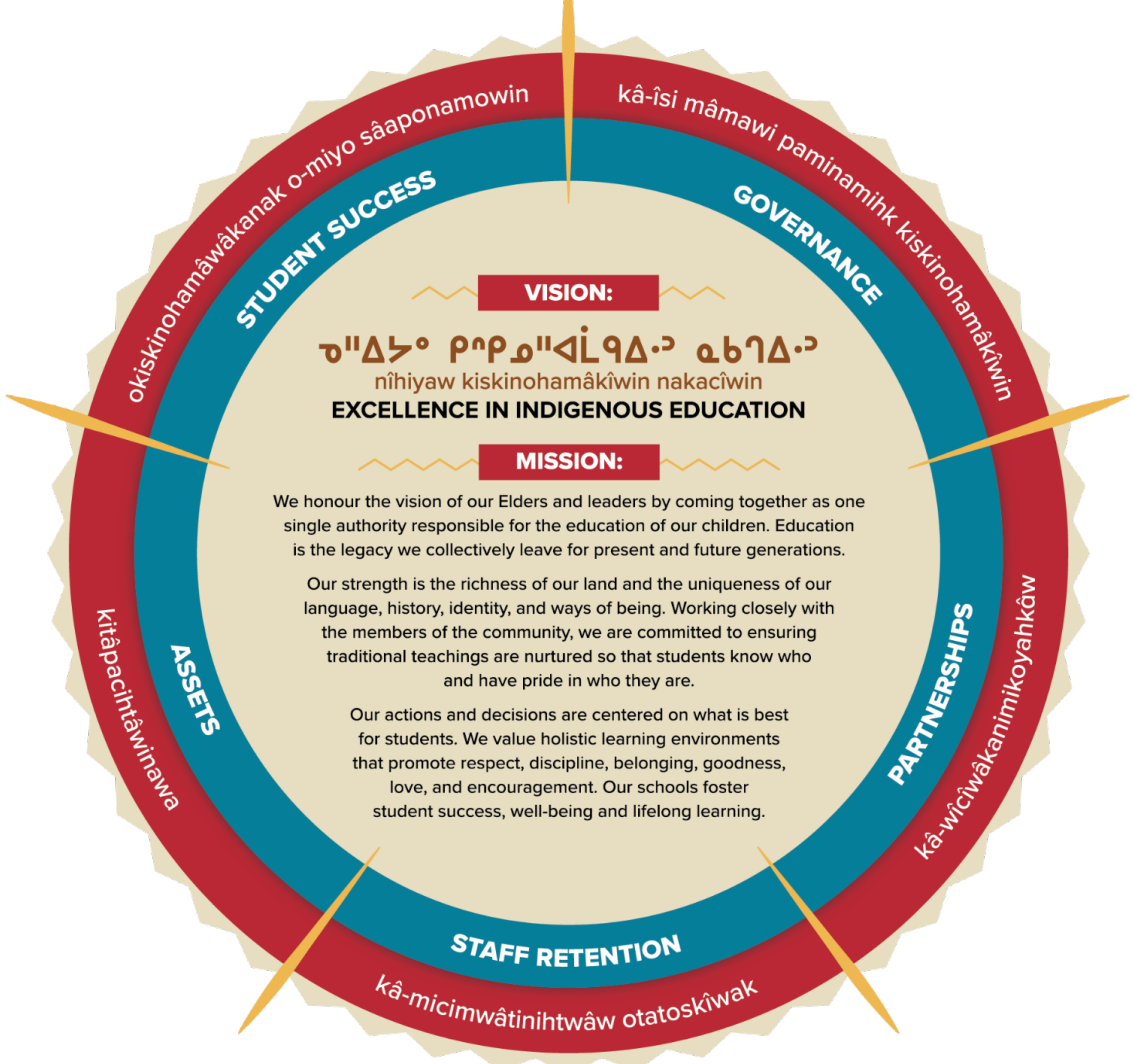
## How is it used:

- Identifies common learning objectives and activities on a seasonal basis throughout the school year
- Our teachers use the learning objectives in the CCC across all core subjects

## Why it is important:

- Students see themselves, their lived experiences and their communities in the classroom each day.





okkiskinohamâwâkanak o-miyo sâaponamowin

kâ-îsi mâmawi paminamihk kiskinohamâkîwin

**STUDENT SUCCESS**

**GOVERNANCE**

**VISION:**

ᓂ"Δ>° ρ"ρ,ᓂ"ΔL9Δ.ᓂ ᓇᓃᓖΔ.ᓂ  
 nîhiyaw kiskinohamâkîwin nakaciwin  
**EXCELLENCE IN INDIGENOUS EDUCATION**

**MISSION:**

We honour the vision of our Elders and leaders by coming together as one single authority responsible for the education of our children. Education is the legacy we collectively leave for present and future generations.

Our strength is the richness of our land and the uniqueness of our language, history, identity, and ways of being. Working closely with the members of the community, we are committed to ensuring traditional teachings are nurtured so that students know who and have pride in who they are.

Our actions and decisions are centered on what is best for students. We value holistic learning environments that promote respect, discipline, belonging, goodness, love, and encouragement. Our schools foster student success, well-being and lifelong learning.

Kitâpacihtâwinawa  
**ASSETS**

kâ-wîcîwâkanimikoyahkâw  
**PARTNERSHIPS**

**STAFF RETENTION**

kâ-mîcimwâtinihtwâw otatoskîwak

# Lessons Learned and Future Work

## Community engagement

- strong communication plan/continuous engagement

## Negotiations

- Lock in critical elements in the agreement and not for future negotiations
- Needs based model



# KTCEA recruitment video

<https://www.google.com/search?q=ktcea+video&safe=active&ssui=on#fpstate=ive&vld=cid:lcea366,vid:Nut4ezldVYQ,st:0>

# *Discussion/Questions*

