



# MI'GMAQ / WOLASTOQIYIK SOCIAL DEVELOPMENT SUPPORT LODGE

NB SOCIAL REFORM

Ruth Levi BSW, MSW  
Executive Director

# OUTLINE

- Introduction
- History
- 2023 MWSD Policy & Case Management
- Moving Forward: Increase Rates

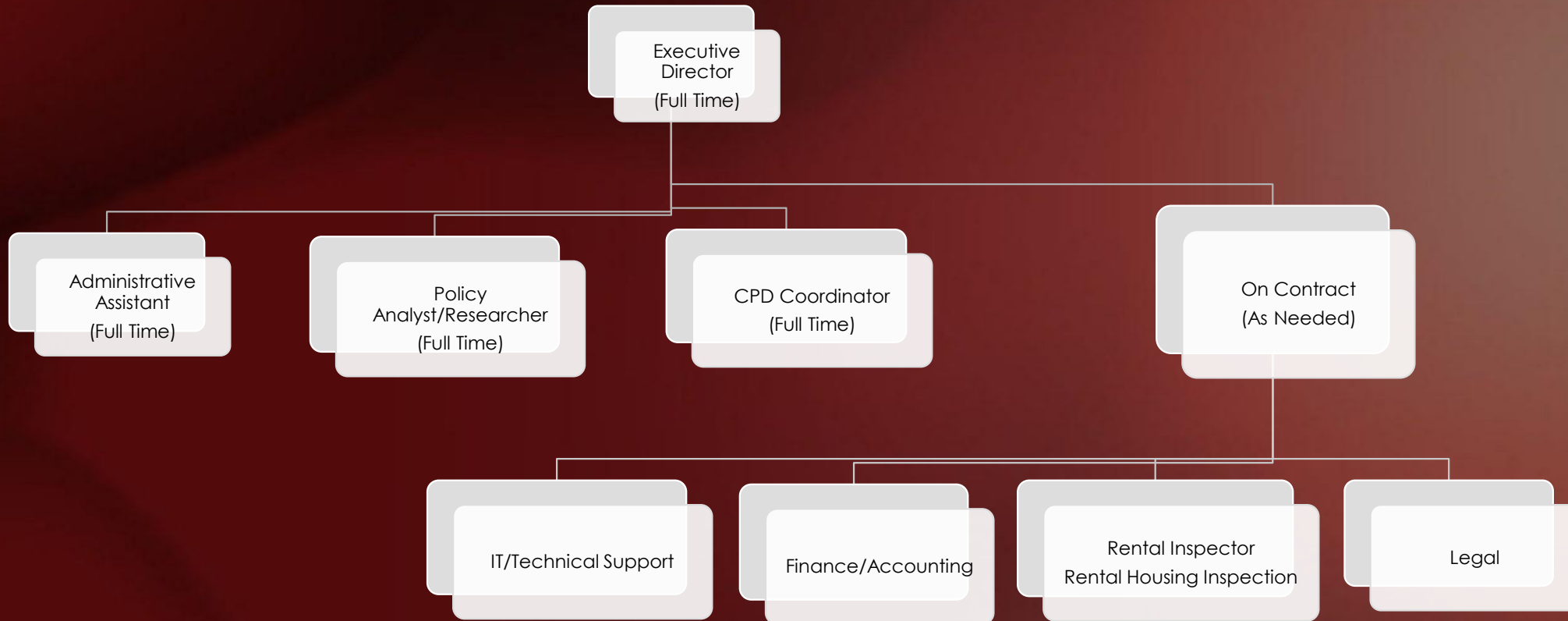


# MWSD SUPPORT LODGE

- A centralized aggregated body to develop and support the delivery of SA within our NB First Nation communities
- A central framework approach, with flexibility for some deviation from community to community
- Each community will continue to deliver SA on their own
- SDA networking and professional development
- Appeals process, Frauds process, Rentalsman Services delivery



# MWSDSL ORGANIZATIONAL CHART



# HISTORY

- 2011 Provincial Policy Imposition by Federal Government
- Court case : *Chief Simon vs Attorney General of Canada*
- 2016 Social Reform
- Development of Support Lodge



# 2023 MWSD POLICY

- New, and has yet to be financially approved by Treasury Board
- Priorities:
  - Rate increased based on cost of living
    - Basic / Shelter / Special Needs
  - Budget & deficit process for eligibility
  - Clothing (bi-annually, 1<sup>st</sup> communion, confirmation, graduation, funerals)
  - Elders & EI Recipients



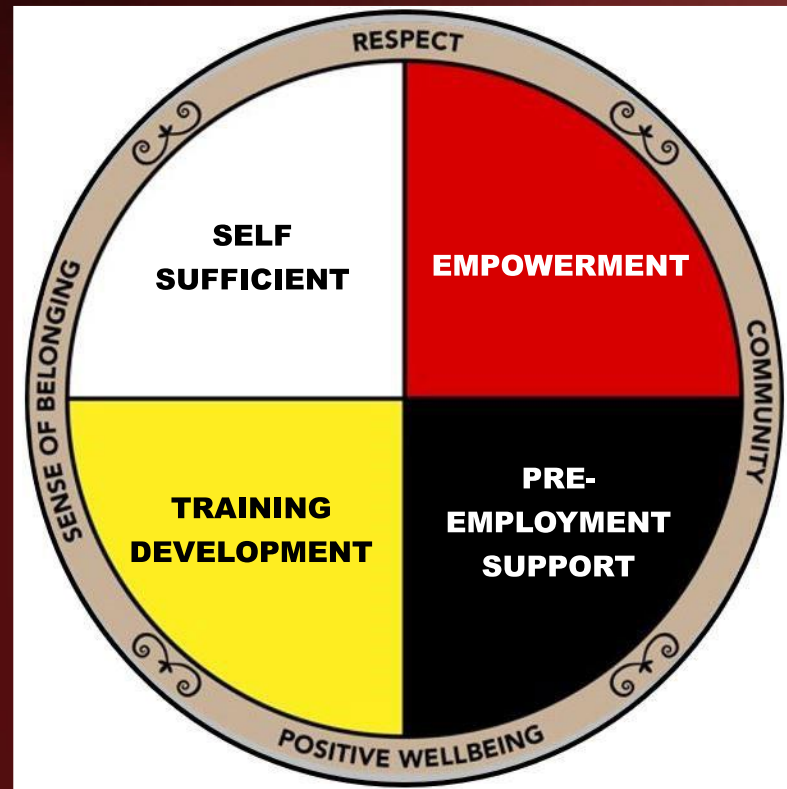


# MWSD - CASE MANAGEMENT

- A holistic approach to assist and support the individual's movement towards independence and self-sufficiency
- To work closely with other services/programs to assist with meeting their case plan goals
- Support
- Transitional services



# MWSD - CASE MANAGEMENT





# CURRENT NB FIRST NATION RATES

- 15 First Nation Communities in NB
- Based on 1991 policy & rates
- \$80 per week or \$1 60 bi-weekly
- Cost of living - 63% increase since 1991



# CURRENT NB FIRST NATION RATES

**\$80.00**

**per week**

- Food (30%) \$24.00
- Home/Personal (7.5%) \$6.00
- Transportation (7.5%) \$6.00
- Shelter (25%) \$20.00
- Utilities (20%) \$16.00
- Clothing (10%) \$8.00

# CURRENT NB FIRST NATION RATES

<b>\$80.00</b>	<b>per week</b>	<b>per day</b>
• Food (30%)	\$24.00	\$3.42
• Home/Personal (7.5%)	\$6.00	\$0.85
• Transportation (7.5%)	\$6.00	\$0.85
• Shelter (25%)	\$20.00	\$2.85
• Utilities (20%)	\$16.00	\$2.28
• Clothing (10%)	\$8.00	\$1.14

# CURRENT NB FIRST NATION RATES

<b>\$80.00</b>	<b>per week</b>	<b>per day</b>	<b>Avg \$ (1 person)</b>
• Food (30%)	\$24.00	\$3.42	\$////
• Home/Personal (7.5%)	\$6.00	\$0.85	\$////
• Transportation (7.5%)	\$6.00	\$0.85	\$////
• Shelter (25%)	\$20.00	\$2.85	\$////
• Utilities (20%)	\$16.00	\$2.28	\$////
• Clothing (10%)	\$8.00	\$1.14	\$////

HOW DO WE SUPPORT OUR  
COMMUNITY MEMBERS THROUGH  
CASE MANAGEMENT, IF THEY  
CANNOT AFFORD TO LIVE?



# OELALIOG

Ruth Levi

[mizlevi@Hotmail.com](mailto:mizlevi@Hotmail.com)

506-523-5086